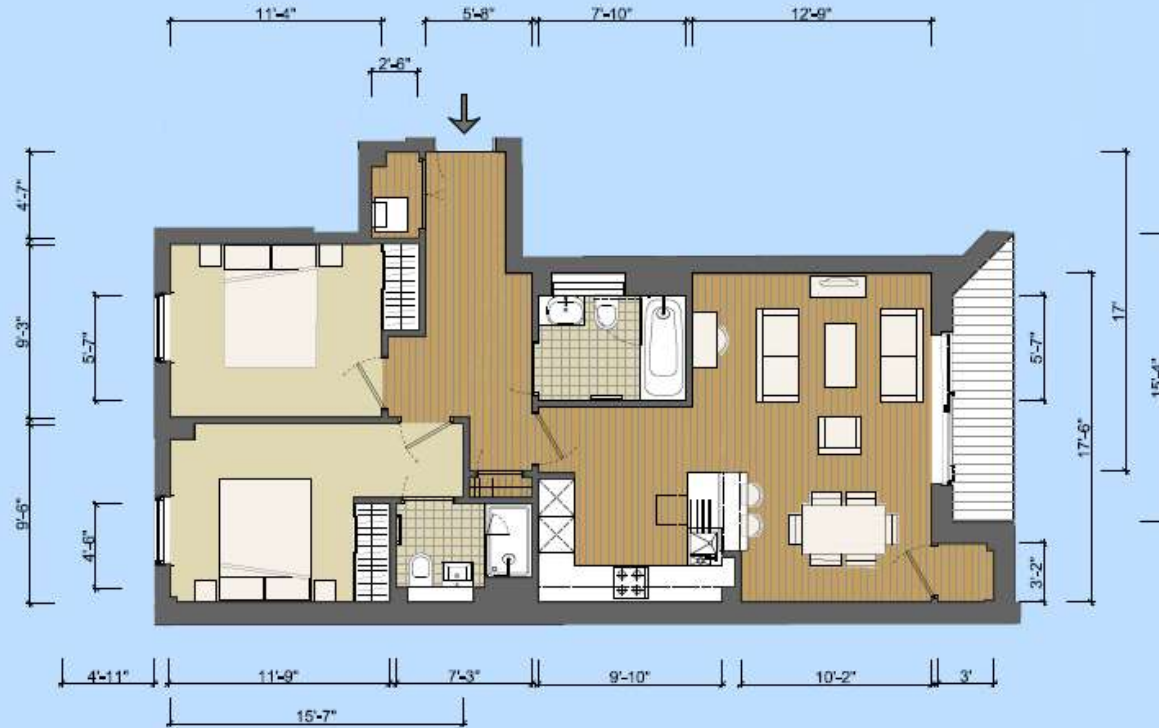


Apartment floor to ceiling height in all main rooms - 8'4" (2.55m)  
 Apartment 10; floor to ceiling height in Bed 2 - 8'2" (2.49m)



| APARTMENT          | INTERNAL AREA         | BALCONY AREA        | TOTAL AREA            |
|--------------------|-----------------------|---------------------|-----------------------|
| No. 10 (3rd Floor) | 782 sq.ft (72.6 sq.m) | 43 sq.ft (4.0 sq.m) | 825 sq.ft (76.5 sq.m) |
| No. 13 (4th Floor) | 780 sq.ft (72.5 sq.m) | 43 sq.ft (4.0 sq.m) | 823 sq.ft (76.5 sq.m) |
| No. 15 (5th Floor) | 781 sq.ft (72.6 sq.m) | 43 sq.ft (4.0 sq.m) | 824 sq.ft (76.6 sq.m) |

Any areas, measurements or distances are approximate.  
 The text, photographs and plans are for guidance only and are not necessarily comprehensive.

Version 06 09-11-16

