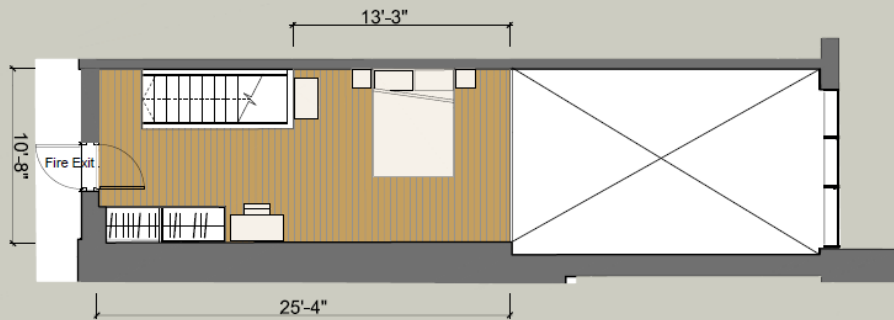


10B Eldridge Street, Brewery Square, Dorchester DT1 1HE

Loft Apartment floor to ceiling height - Ground Floor 14' 10" (4.525m)
 Kitchen/Bathroom 7' 3" (2.22m)
 Bedroom/Mezzanine 8' 4" (2.55m)



GROUND FLOOR



MEZZANINE

APARTMENT	GROUND FLOOR AREA	MEZZANINE AREA	TOTAL AREA
No. 10B	506 sq.ft (47.02 sq.m)	254 sq.ft (23.63 sq.m)	760 sq.ft (70.65 sq.m)



Any areas, measurements or distances are approximate.
 The text, photographs and plans are for guidance only and are not necessarily comprehensive.

Version 3 27-02-18



www.maxgateproperties.co.uk